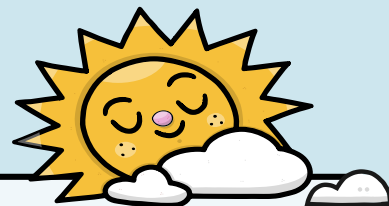
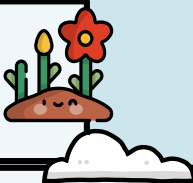


Panhypopituitarism



A. Definition

Panhypopituitarism is a condition in which the production and secretion of all hormones by the pituitary gland is reduced, including Growth Hormone (GH), Thyroid Stimulating Hormone (TSH), Adrenocorticotrophic Hormone (ACTH), Luteinizing Hormone (LH) and Follicle Stimulating Hormone (FSH), Vasopressin or anti-diuretic hormone (ADH). Reduced hormone output could be due to problem with either the hypothalamus or pituitary gland.

B. Signs & Symptoms

Depends on which hormone is affected

C. Diagnostic tests

- Neurological & eye exam
- Blood and urine tests
- Imaging: X-Ray or MRI

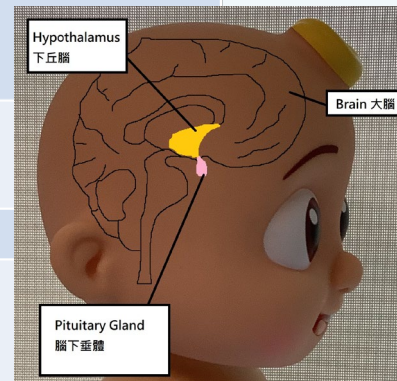
D. Treatment

- Drug therapy: to replace hormones
- Treating the underlying etiology

E. Follow-up

Periodic follow-up tests for adjusting dosage levels and for repeating imaging tests or blood tests if needed.

| Hormone | Signs & Symptoms |
|---------|---|
| GH | Abnormal slowing of growth Prolonged jaundice in infants Small penis in males |
| LH/FSH | Delayed puberty Less frequent menstrual periods Small penis in males |
| TSH | Cold intolerance |
| ACTH | Low blood glucose Poor appetite Nausea or dizziness Fatigue or drowsiness |
| ADH | Excessive thirst and excessive urination Unusually dry skin |



香港兒童醫院

Hong Kong Children's Hospital
Endocrine and Diabetes Team